

FACILITATING DIGITAL DELIVERY AND SMART SUBSEA DATA MANAGEMENT

Greg Hammond, Digital Lead - UTEC

ACTEON | DATA AND
ROBOTICS

www.acteon.com

MARINE ENERGY AND INFRASTRUCTURE SERVICES

DIVISIONS AND MARKET SEGMENTS

ACTEON | DATA AND ROBOTICS

ELECTRONICS AND TOOLING

 **seatronics**

GEO-SERVICES

 **Benthic** |  **TERRASOND** |  **UTEC**

STRUCTURAL MONITORING

 **PULSE**
Structural Monitoring

ACTEON | ENGINEERING, MOORINGS AND FOUNDATIONS

ADVANCED SYSTEMS ENGINEERING

MARINE FOUNDATIONS

MOORINGS AND ANCHORS

ACTEON | ENERGY SERVICES

CORROSION MANAGEMENT



CUTTING AND DECOMMISSIONING

ENERGY RESOURCING



FLEX-LAY AND RETRIEVAL



ACTEON

WHY WORK WITH US?

Acteon combines the expertise of three leading marine survey and site characterisation brands, to provide truly integrated, innovative solutions.

With superior geo-data insights, we enable the optimisation of the design and installation of marine structures, while ensuring safe and sustainable outcomes.

DIFFERENTIATOR **DIGITAL DELIVERY**
COLLABORATION PROVEN TECHNOLOGIES
INTEGRATION REMOTE ACCESS



DATA CHALLENGES

Advanced sensors and data acquisition technology is generating information faster. This is creating a data management challenge.

BIG DATA

- ▶ Poorly structured
- ▶ Disorganised
- ▶ Various data sources
- ▶ Missing information
- ▶ Complex data
- ▶ Large files
- ▶ Data frequency
- ▶ Accessibility
- ▶ Specialist software
- ▶ Future proof

DATA SOLUTIONS

iSite, a UTEC digital solution provides an intuitive interactive delivery portal for survey and inspection data, designed to meet the needs of the energy market.

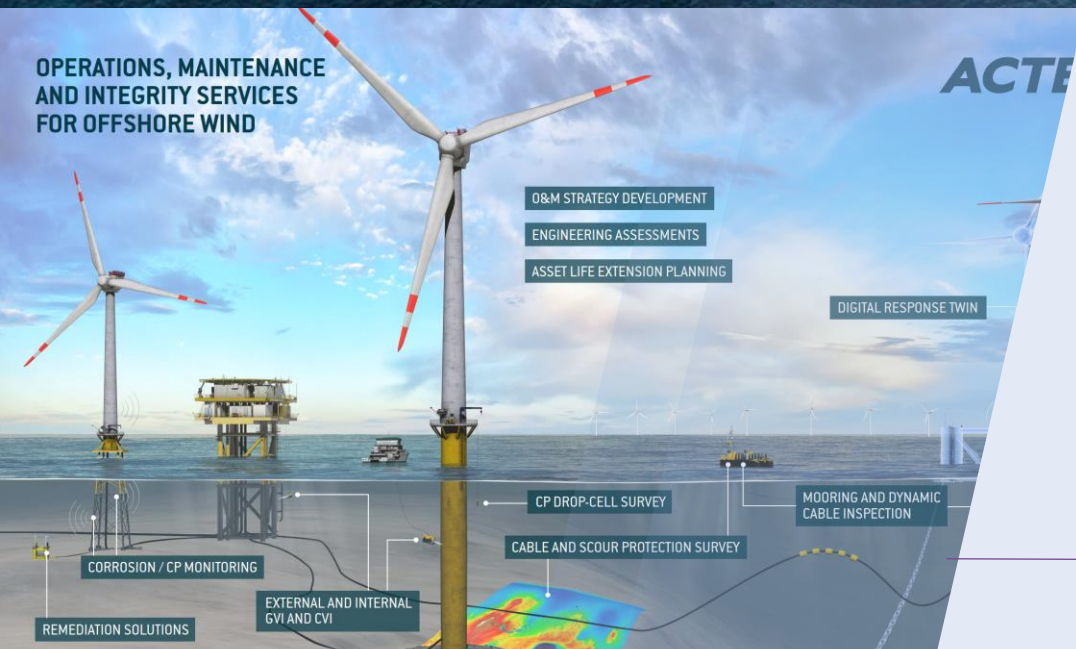
- ▶ Visual insights
- ▶ Lifecycle solution
- ▶ Data agnostic
- ▶ Centrally accessible
- ▶ Intuitive
- ▶ Cloud-based
- ▶ Trend
- ▶ Analytics
- ▶ Interrogation



New APPROACHES

Providing transparency for all stakeholders responsible for regulatory inspection.

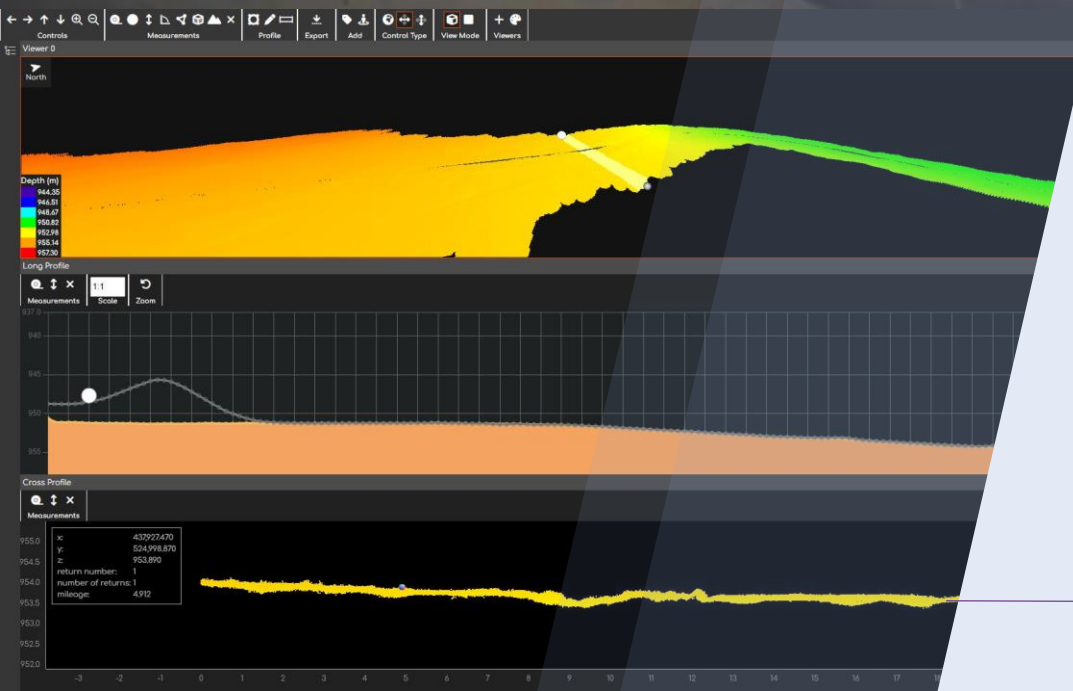
- ▶ Active and predictive condition monitoring
- ▶ Safety and associated KPI reporting
- ▶ Preplan operations
- ▶ Improved operational efficiency
- ▶ Reduced cost to insight
- ▶ Minimising your carbon footprint
- ▶ Accessibility of information



Data AGNOSTIC

At the heart of digital data management is the need to connect and make available critical data.

- ▶ Reports
- ▶ Images and video
- ▶ Anomaly tracking
- ▶ GIS interfaces
- ▶ Subsea survey data
- ▶ 3D models
- ▶ Data interrogation tools
- ▶ Statistical reporting
- ▶ Trend analysis
- ▶ Terrestrial survey data



Consolidated APPROACH

Calling a spade, a spade.

- ▶ Data integration and tools over the lifecycle of an asset
- ▶ Consolidation of legacy information
- ▶ Standardised reporting and data entry approaches
- ▶ Automatic report generation
- ▶ Consistency of data
- ▶ Access controls
- ▶ Futureproof cloud solutions

OUR TRACK RECORD

52

**ASSETS MANAGED
GLOBALLY**

10+

**YEARS EXPERIENCE IN
DATA MANAGEMENT**

55+

SATISFIED CLIENTS

89%

**OF USERS EXPERIENCED
COST SAVINGS**

3,000+

EXTERNAL USERS

THANK YOU

www.acteon.com

ACTEON

DATA AND
ROBOTICS

